

Волгоградский государственный университет

PRACTICE OF INFRASTRUCTURAL TRANSFORMATIONS OF EDUCATIONAL ENVIRONMENT AS KEY FACTOR OF INCLUSIVE GROWTH OF RUSSIAN ECONOMY

**Елтанская Елена
Александровна**

к.ф.н., доцент,
заведующая кафедрой
иноязычной
коммуникации и
лингводидактики

**Генералова Лариса
Михайловна**

к.ф.н., доцент кафедры
теории и практики
перевода и лингвистики

**Аржановская
Анастасия
Валерьевна**

к.ф.н., доцент кафедры
иноязычной
коммуникации и
лингводидактики

25 мая 2022 г.

INCLUSIVE GROWTH

creating favourable conditions for improving life quality and ensuring equal opportunities for all groups of the population



1 family income

2 employment opportunities

3 security

4 living standards

METHODOLOGY

The research is characterized by a multidisciplinary approach, as it integrates sociological, pedagogical, historical, and general scientific approaches and methods

1

convergent
approach

2

competence
-based
approach

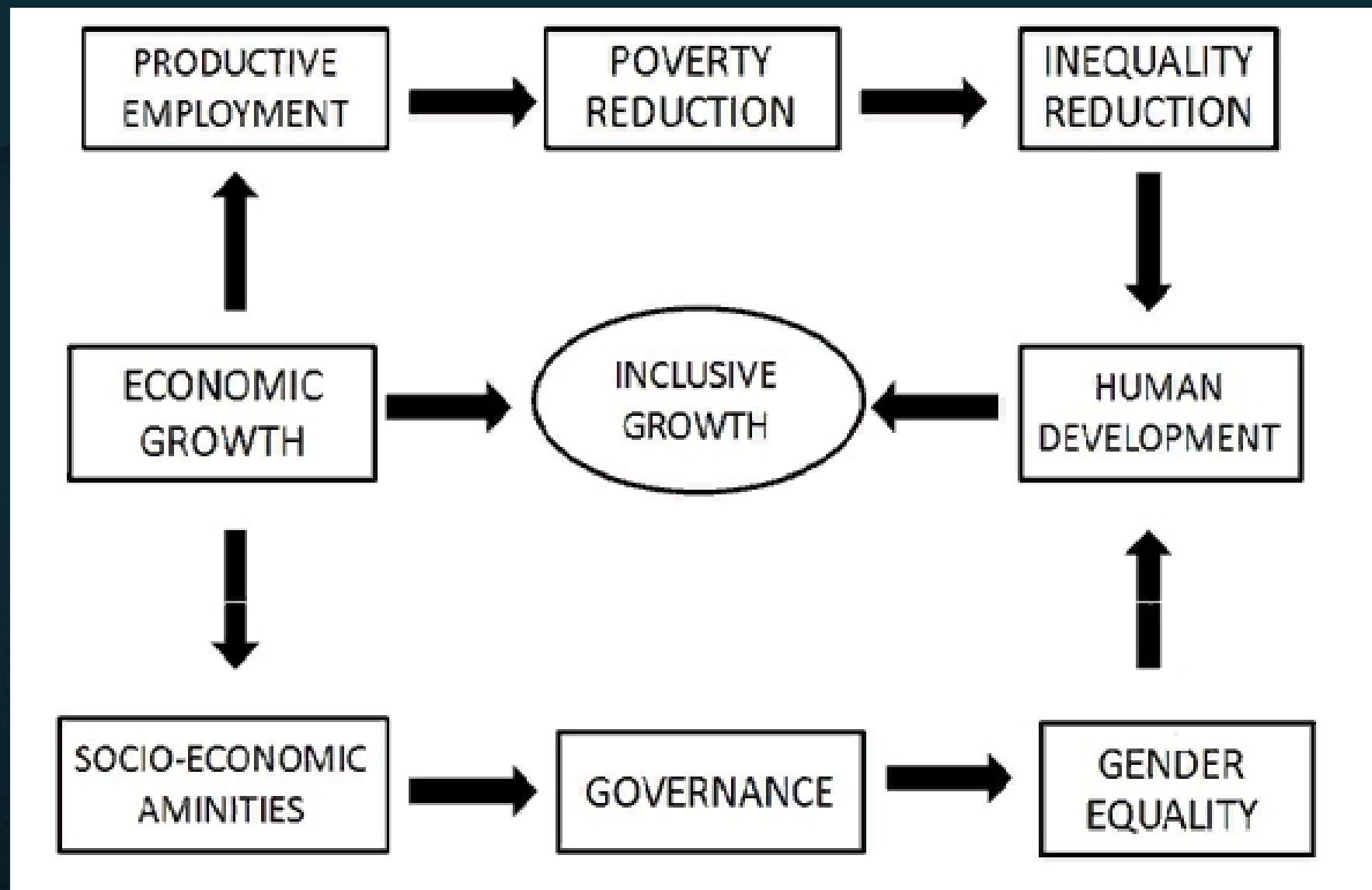
3

system-
activity
approach



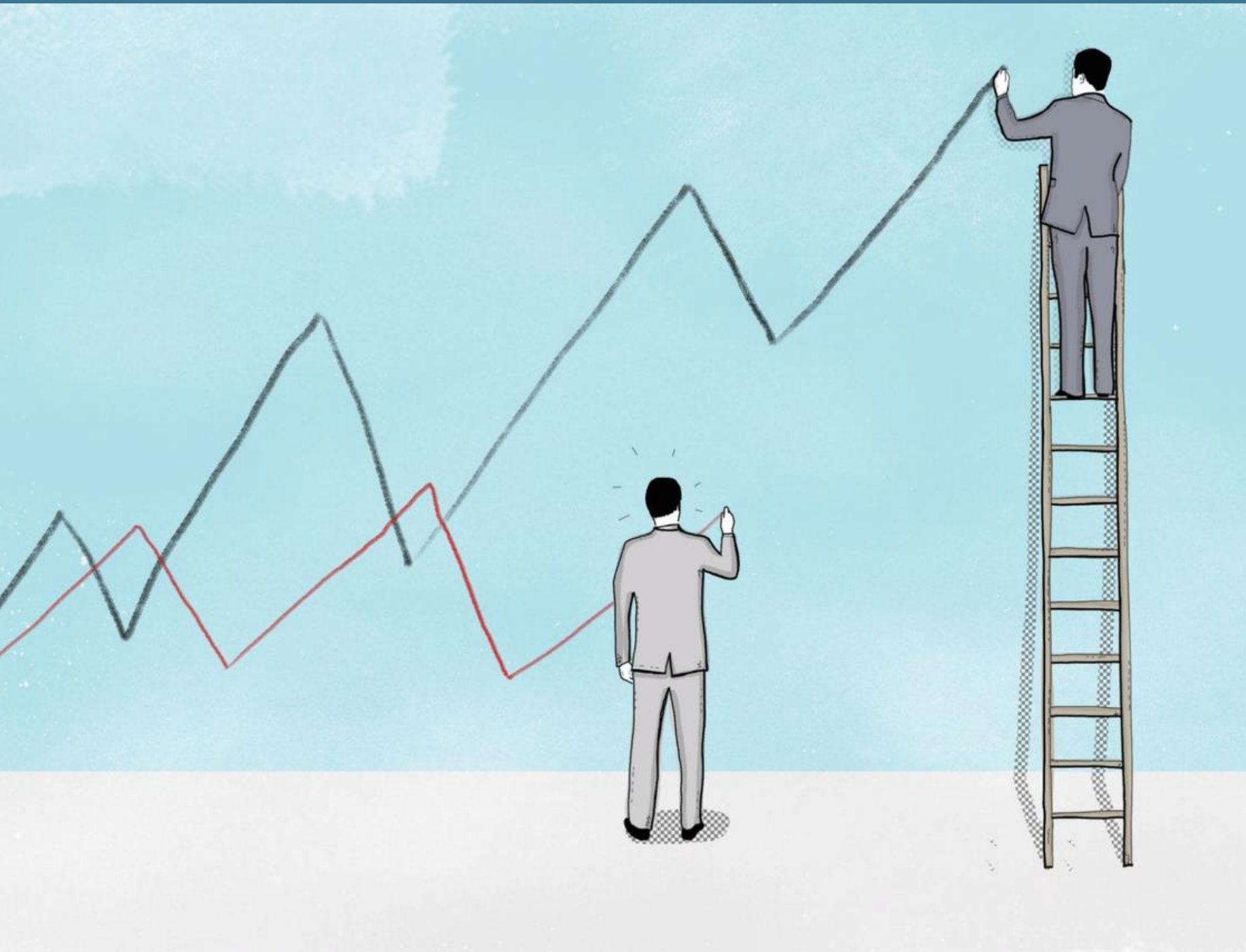
RESULTS

fundamental concept of inclusive growth



ECONOMY

quick respond to weak economic development and the resulting growing inequality



ensure the prosperity of the largest possible part of the population

solving issues of social-economic policy, empowering people

TECHNOLOGY

replace technologically
backward segments

increase the level of
scientific and technological
equipment of production
facilities

reduce technological
imbalance



EDUCATION

search for adequate
concepts of economic
education

professional training in the
primary labour market

diversity of learning

space for research
orientation in training
through digital media



CONCLUSION

INFRASTRUCTURAL TRANSFORMATIONS OF EDUCATIONAL ENVIRONMENT



qualitative
renewal of
the
education
system



prospects for
digital
education and
employment



broadly
shared
prosperity



new
employment
opportunities



perfect
balance
between
society, the
state, and
business



СПАСИБО!